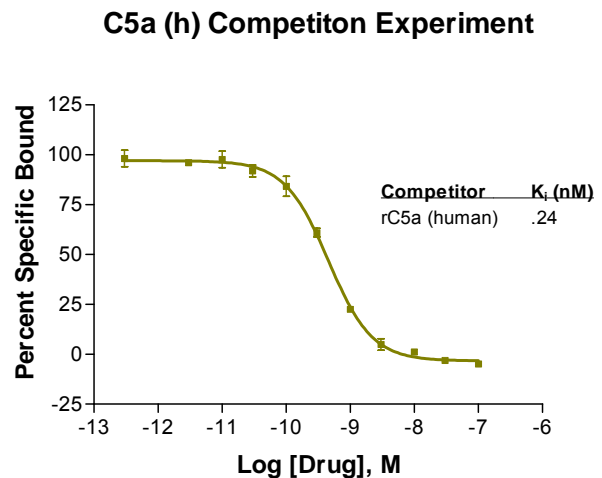
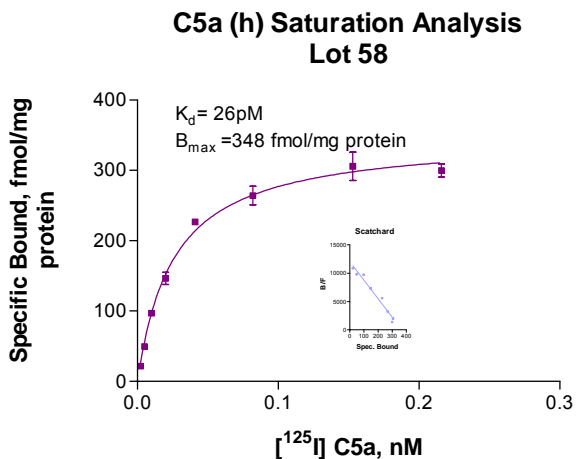


RECEPTOR MEMBRANE PRODUCT SPEC SHEET

Complement C5a Receptor (Human)

CAT #:	C5a-100
Lot #:	58
K_d:	[¹²⁵ I] C5a = 26 pM
B_{max} (Receptor density):	348 fmol/mg protein
Protein Concentration:	C5a-100: 0.75mg/ml
Packaging:	Membranes are suspended in 50 mM HEPES containing 5 mM MgCl ₂ , 1 mM CaCl ₂ 0.1% bacitracin, and 0.1% BSA, (pH 7.3 at 25°C).
Volume per vial:	C5a-100: 1.0 ml
Assay Procedure:	Thaw vials quickly; dilute with assay buffer; homogenize; store on ice until addition to assay tubes
Assay buffer:	50mM HEPES containing 5 mM MgCl ₂ , 1 mM CaCl ₂ , 0.1 mM PMSF, 0.1% bacitracin, and 0.1% BSA (pH 7.3 at 25°C)
Assay volume:	250 μl
Radioligand:	25 μl of [¹²⁵ I] C5a (0.025 nM final)
Non-specific:	25 μl C5a (0.2 μM final)
Receptor:	200 μl of receptor suspension. Resuspend 100 units in 20 ml
Incubation Time:	120 minutes
Incubation Temp:	on wet ice
Filters:	GF/B pretreated with 0.1% PEI
Wash buffer:	50 mM NaCl, wash 5 times with 1 ml per tube.

[¹²⁵I]-C5a binding to Human Complement C5a - Lot# 58



FOR NON-HUMAN INVESTIGATION RESEARCH USE ONLY. NOT FOR RESALE

Copyright ©2007. Caliper Life Sciences Corp. All Rights Reserved.