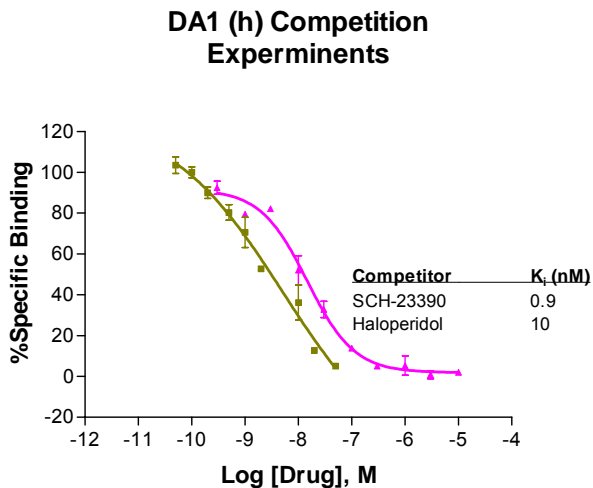
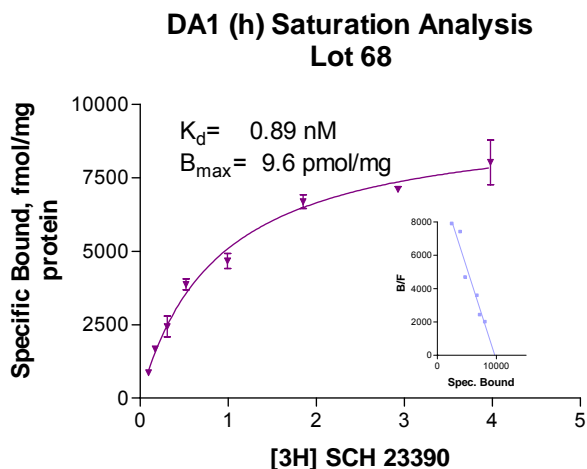


RECEPTOR MEMBRANE PRODUCT SPEC SHEET

Recombinant Dopamine DA1 (Human)

| | |
|--|---|
| CAT #: | DA1100 |
| Lot #: | 68 |
| K_d: | [³ H] SCH23390 = 0.89 nM |
| B_{max} (Receptor density): | 9.6 pmol/mg protein |
| Protein Concentration: | DA1-100: 0.4mg/ml |
| Packaging: | Membranes are suspended in 50 mM TRIS-HCl containing 10 mM MgCl ₂ , 1.5 mM CaCl ₂ , 1mM EDTA, 5 mM KCl, 10% glycerol, (pH 7.4 at 25°C). |
| Volume per vial: | DA1-100: 1.0ml |
| Assay Procedure: | Thaw vials quickly; dilute with assay buffer; homogenize; store on ice until addition to assay tubes |
| Assay buffer: | 50 mM TRIS-HCl, (pH 7.4 at 25°C) containing 10 mM MgCl ₂ , 1.5 mM CaCl ₂ , 1mM EDTA, 5 mM KCl |
| Assay volume: | 500 µl |
| Radioligand: | 50 µl of [³ H] SCH23390 (0.5 nM final) |
| Non-specific: | 50 µl SCH23390 (0.2 µM final) |
| Receptor: | 400 µl of receptor suspension. Resuspend 100 units in 40 mls |
| Incubation Time: | 60 minutes |
| Incubation Temp: | RT |
| Filters: | GF/B pretreated with 0.3% PEI |
| Wash buffer: | 50 mM NaCl, wash 5 times with 1 ml per tube. |

[³H]-SCH23390 binding to Human Recombinant Dopamine DA1 - Lot# 68



FOR NON-HUMAN INVESTIGATION RESEARCH USE ONLY. NOT FOR RESALE

Copyright ©2007. Caliper Life Sciences Corp. All Rights Reserved.