



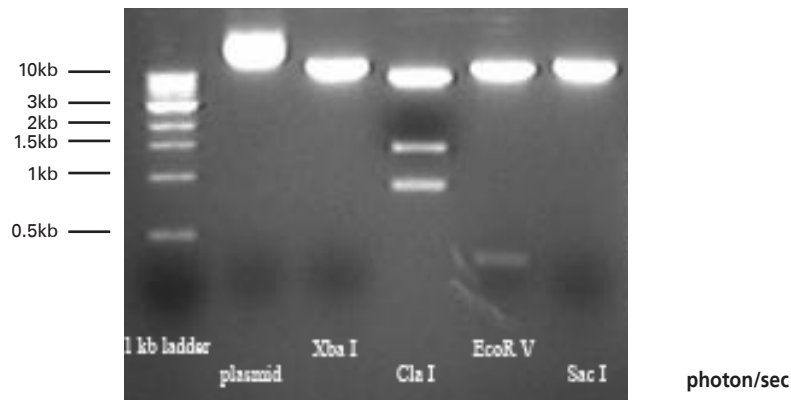
# Bioware Plasmid - pXen-13

(pSK *luxCDABE*, 8802bp)

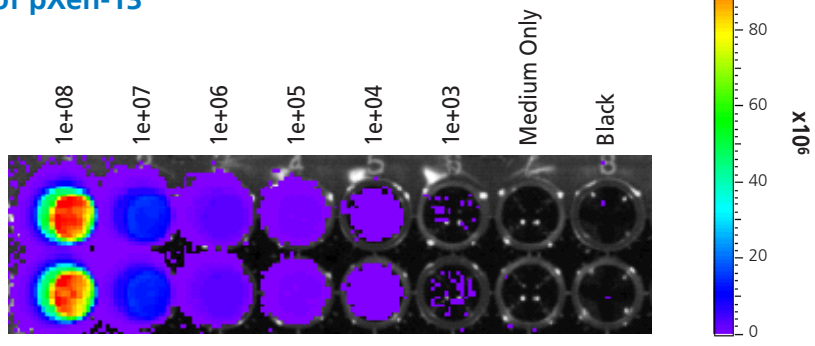
## Overview Sheet

### Host/Plasmid Information

**Host Bacterium:** E. coli DH5 $\alpha$   
**Antibiotic Selection:** Ampicillin at 100  $\mu$ g/ml  
**Growth Medium:** LB  
**Growth Temperature:** 37 $^{\circ}$  C  
**Size:** 10  $\mu$ g/vial  
**Restriction Sites:** The plasmid map is confirmed by digestion patterns of the following enzymes: XbaI(8802bp), ClaI(854bp, 1360bp and 6642bp), EcoRV(364bp and 8438bp) and SacI(8802bp).



### Bioluminescence of pXen-13



### Protocol

DH5 $\alpha$ -pXen-13 in 100  $\mu$ L LB medium are seeded into a 96-well-plate by 1:10 serial dilution from 1e+08 cfu (well 1#) to 1e+03 cfu (well 6#). The plate was imaged using an IVIS imaging system (Bin M(4), FOV12, f1, 30s).



**Corporate Headquarters**  
68 Elm Street  
Hopkinton, MA 01748-1668  
Tel: 1.508.435.9500  
Email: [cust.support@caliperLS.com](mailto:cust.support@caliperLS.com)  
[www.caliperLS.com](http://www.caliperLS.com)



©2008 Caliper Life Sciences. All rights reserved.  
IVIS, Bioware and Xenogen are tradenames  
and/or trademarks of Caliper Life Sciences, Inc.

BIO-SS-02 Jan 08