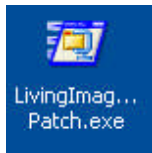


Living Image 3.1 – F-stop motor back-lash patch (3.1.0.7635)

1. Prerequisites

An IVIS 200 or Spectrum already installed with **Living Image 3.1 (3.1.0.7069)**

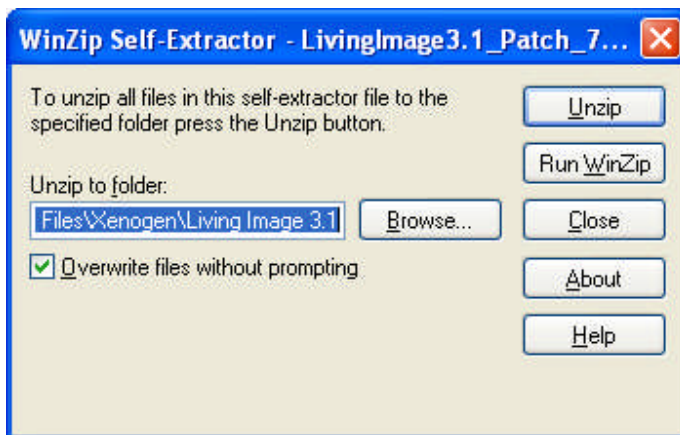
2. Package



This patch comes as a self-installing WinZip executable, which when invoked will overwrite the Living Image 3.1 acquisition module, with a new version

3. Installing the Patch – 3.1.0.7635

Double-click on the package and you will be prompted with the following screen.



Click on “**Unzip**” button to install the patch.

The default destination folder location for this patch would be:

C:\Program Files\Xenogen\Living Image 3.1

If you have installed Living Image 3.1 to a folder other than the default Living Image 3.1 folder location, then you can change this patch’s destination folder using the “**Browse...**” button before selecting the “**Unzip**” button.

4. Added/Replaced the Files

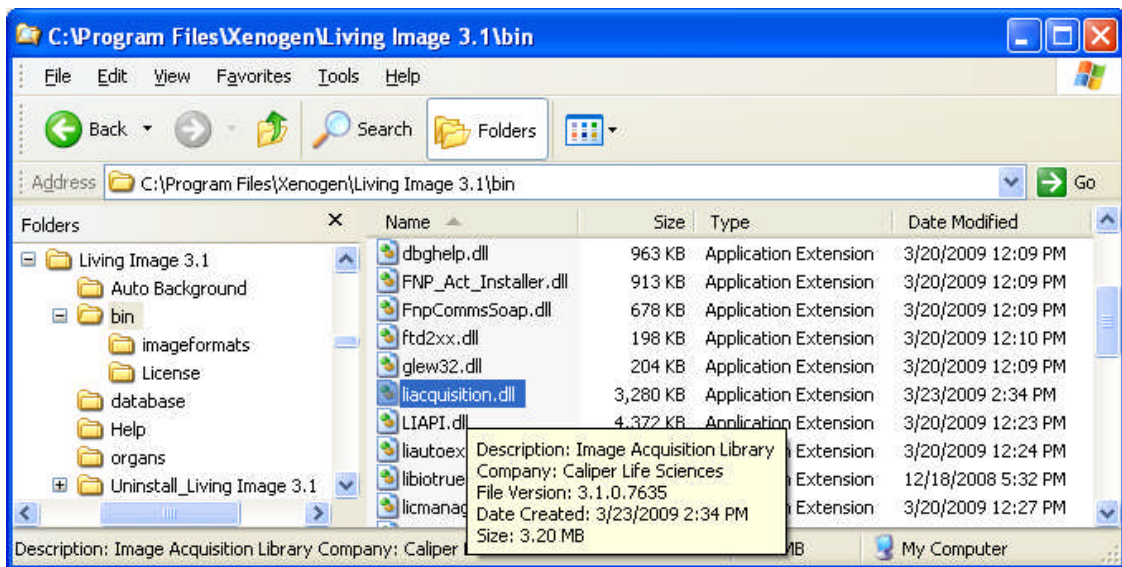
1. C:\Program Files\Xenogen\Living Image 3.1\bin\liacquisition.dll
2. C:\Program Files\Xenogen\Living Image 3.1\help\LivingImage3.1_Patch_7635.pdf

5. Verify Patch Installation

Installation of this patch can be verified by looking at the 'File Version' number displayed for the following file. If the patch was successfully installed, it should read

'3.1.0.7635'

3. C:\Program Files\Xenogen\Living Image 3.1\bin\liacquisition.dll



6. Affected IVIS Systems

This patch applies only to **IVIS 200 and Spectrums** and therefore not applicable to IVIS 50/100/3D/Kinetic

7. What this patch means

Whenever the fstop moves from one position to another, depending on the direction of movement a small positioning error may be introduced due to "backlash" in the gearing mechanism. This backlash may increase with usage and normal wear. This software patch ensures that the fstop is always moved to position from the same direction, eliminating or minimizing positioning inaccuracy due to gear backlash.