

IVIS | Lumina II, Lumina XR and Kinetic



XIC-3 Animal Isolation Chamber Kit
Part Number 123997



ECG Monitoring System for Lumina and Kinetic
Part Number 124445



Ventral Imaging Chamber for Conscious Animal Imaging on the IVIS Kinetic
Part Number 125467



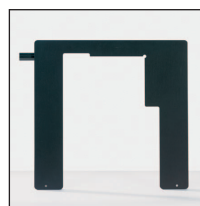
XGI-8 Anesthesia System
Part Number 118918



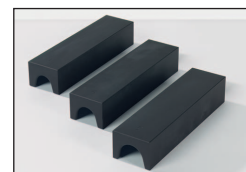
XFOV-24 Expansion Lens for Lumina and Kinetic
Part Number 123177



ZFOV-24 Zoom Lens for Lumina, Kinetic and XR
Part Number 126827



XPP-1 Plate Positioner
Part Number 118949



XAS-3 Animal Shield Kit
Part Number 119002

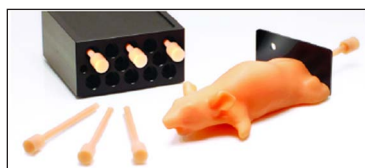


XWS-260 Workbench
Part Number 119207

IVIS Syringe Injection System
Part Number 124633



Calibration Accessories



Phantom Mouse for Fluorescent Imaging
Part Number 121365 XFM-2



Phantom Mouse for Bioluminescent Imaging
Part Number 118993 XPM-2



XRH-2 Reflective Hemisphere
Part Number 118937



XLS-4 Calibrated Light Source
Part Number 118897

Part Number	Emission Filter Options	Fluorophores	Filters
123324	Standard High Spectral Resolution Emission Filter Set	Multiple Fluorophores Spanning 500-900nm	515-575, 575-650, 695-770 and 810-875
123325	500 Series High Spectral Resolution Emission Filter Set	GFP, YFP, PKH26	500,520,540, 560, 580, 600 and 620
123326	600 Series High Spectral Resolution Emission Filter Set	Cy5.5, DsRed, tdTomato, XenoLight 680	580, 600, 620, 640, 660, 680 and 700
123327	700 Series High Spectral Resolution Emission Filter Set	ICG, DiR, XenoLight 750 and XenoLight770	720,740, 760, 780, 800, 820 and 840
126138	Mid-High Range Series High Spectral Resolution Emission Filter Set	Cy5.5, mCherry, TurboRed, XenoLight 680, QD705	640,660,680,700, 720,740 and 760nm

Living Image 4.0 for IVIS Lumina, IVIS Kinetic and IVIS Lumina XR

Living Image software is an advanced tool designed specifically for the IVIS Imaging system platform and contains features to help speed image acquisition and analysis. The software’s new design creates an intuitive, seamless workflow for researchers of all skill levels. New features include: wizard based guidance for advanced imaging protocols, advanced spectral unmixing tools and new color templates.

Part Number	Software Package
126233	1 seat add-on to current Living Image 4.0 users
126234	5 seat add-on to current Living Image 4.0 users
126235	10 seat add-on to current Living Image 4.0 users
126758	25 seat add-on to current Living Image 4.0 users
126759	100 seat add-on to current Living Image 4.0 users
126239	Living Image 4.0 upgrade from Living Image 3.X (Upgrade consists of a system copy and 4 additional seats)
126240	Living Image 4.0 upgrade from Living Image 3.X (Upgrade consists of a single seat)
126241	Living Image 4.0 upgrade from Living Image 3.X (Upgrade consists of 5 additional seats)
126242	Living Image 4.0 upgrade from Living Image 3.X (Upgrade consists of 10 additional seats)
126248	Living Image 4.0 upgrade from Living Image 2.6 and below (Upgrade consists of a system copy and 4 additional seats)
126249	Living Image 4.0 upgrade from Living Image 2.6 and below (Upgrade consists of a single seat)
126250	Living Image 4.0 upgrade from Living Image 2.6 and below (Upgrade consists of 5 additional seats)
126251	Living Image 4.0 upgrade from Living Image 2.6 and below (Upgrade consists of 10 additional seats)